



Multi-Site DBS Center Survey

INTERNATIONAL MOVEMENT DISORDERS SOCIETY 2016

ANKUR BUTALA MD

KELLY MILLS MD



Goals & Objectives

- ▶ To survey how Deep Brain Stimulation (DBS) Centers handle referrals and peri-operative (surgical and non-surgical) treatment of persons with Idiopathic Parkinson Disease
- ▶ Highlight heterogeneity in some aspects of practice to determine which aspects of care might benefit from consensus recommendations

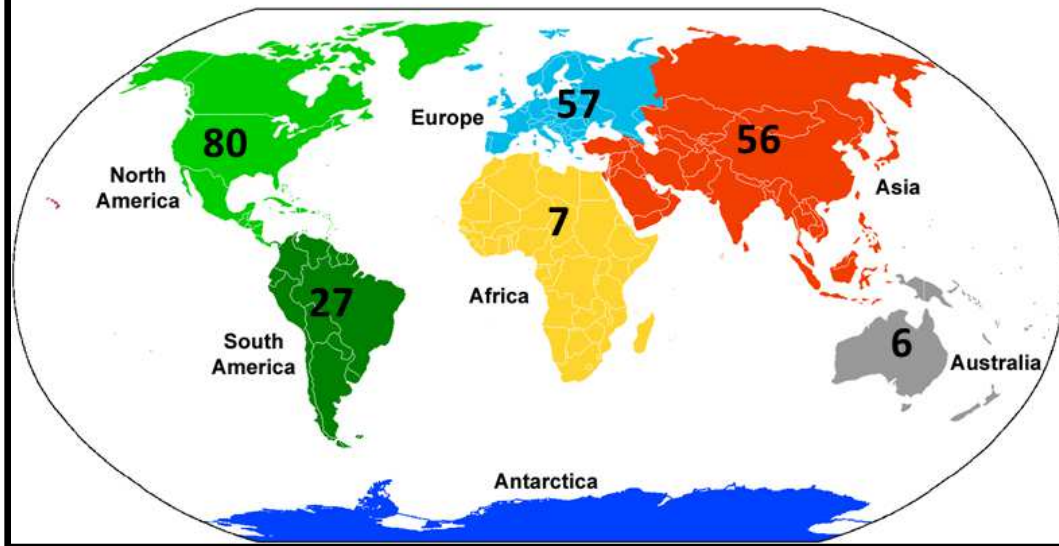


Respondent Demographics

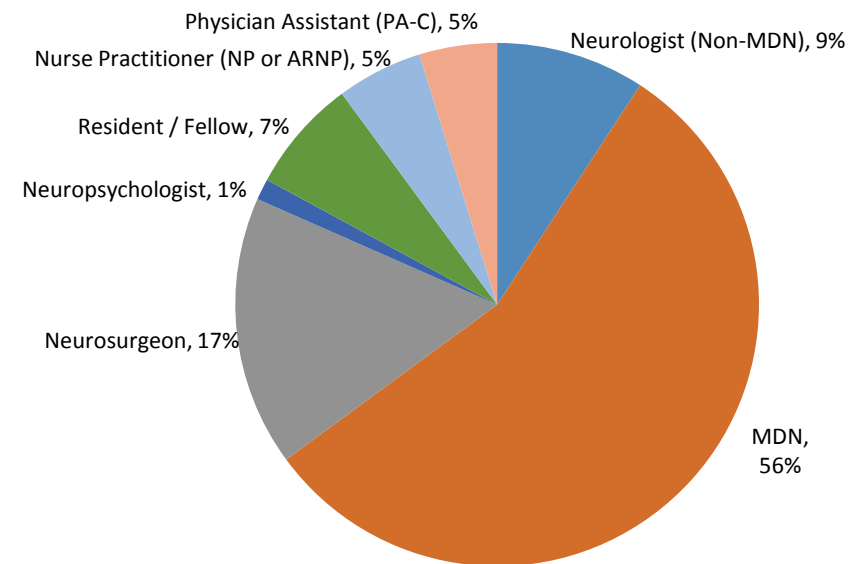
- ▶ 58-question web-based survey which takes approximately 5-10 minutes to complete
 - ▶ Distributed to National Parkinson Disease Foundation Centers of Excellence (n ~ 150)
 - ▶ Distributed to an international cohort via the Movement Disorders Society Mailing List (n ~ 1000)

Respondent Demographics

Total Respondents = 245/1022



Please indicate your specialty / training

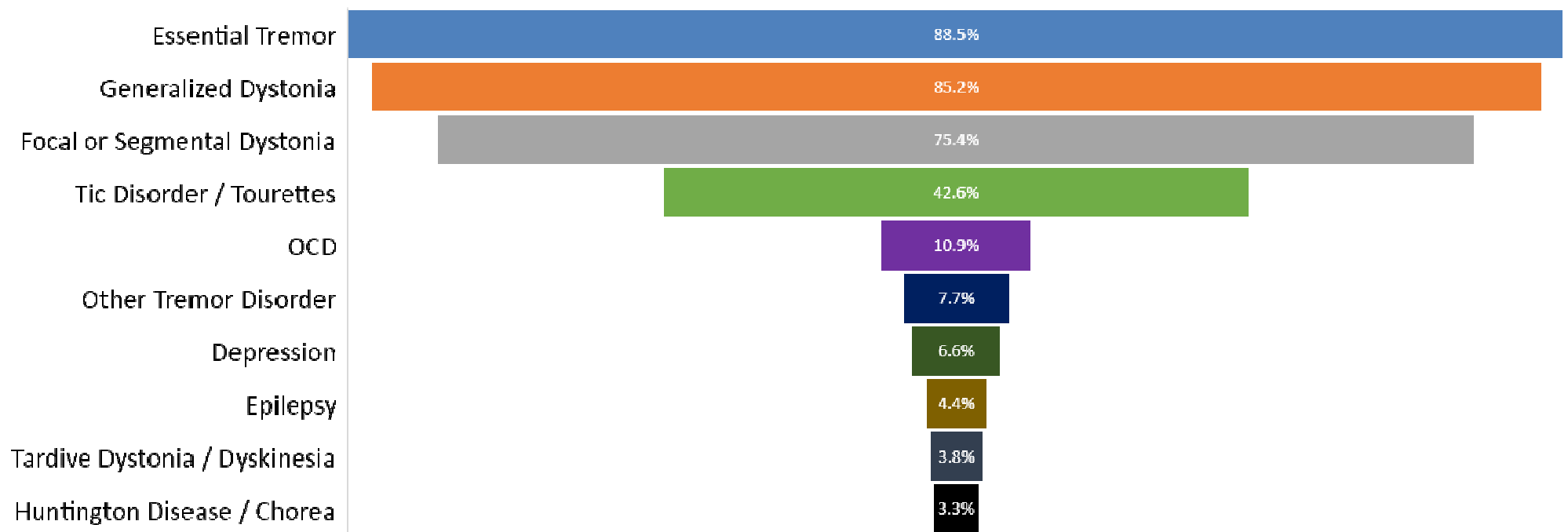


DBS for PD Referral Volume

	Average (SDEV)	Median	Range
Monthly DBS Referrals for PD	7.7 (7.0)	5	0-42
Monthly DBS Surgeries for PD	3.6 (3.6)	2	0-18
Ratio of referrals to surgeries	2.4 (2.5)	2	0-20

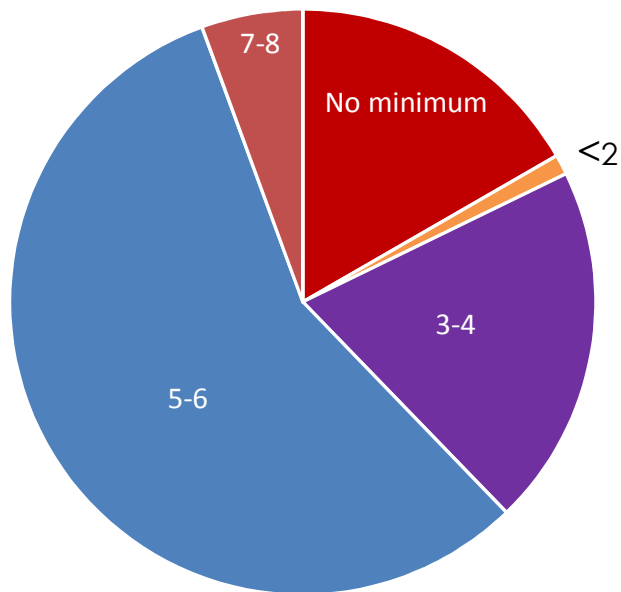
Other Indications Treated

Other DBS Indications Reported

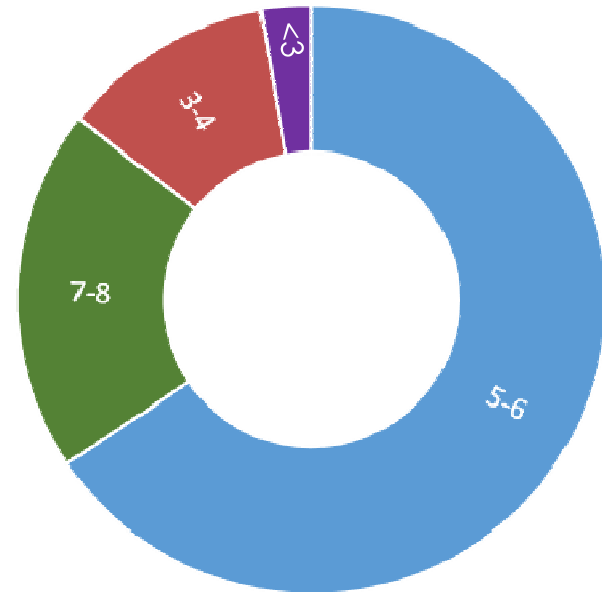


Who should be referred for DBS?

What is the minimum duration of Parkinson Disease (years) before DBS should be considered?

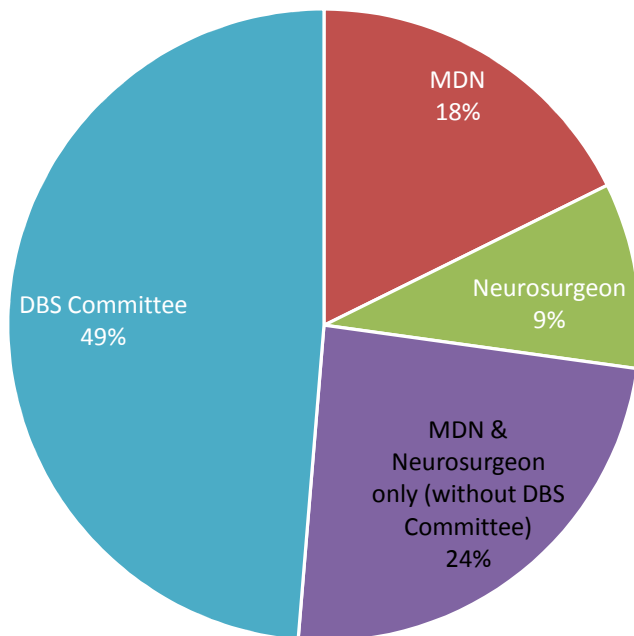


Frequency of Medication Doses (per day) which warrants DBS

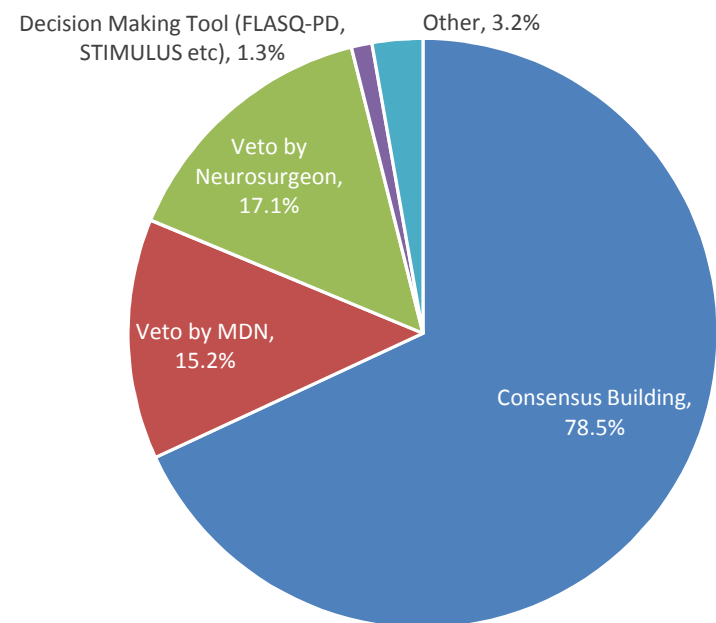


Who (and how) is the final decision RE: DBS made?

Who ultimately Determines Candidacy for DBS?



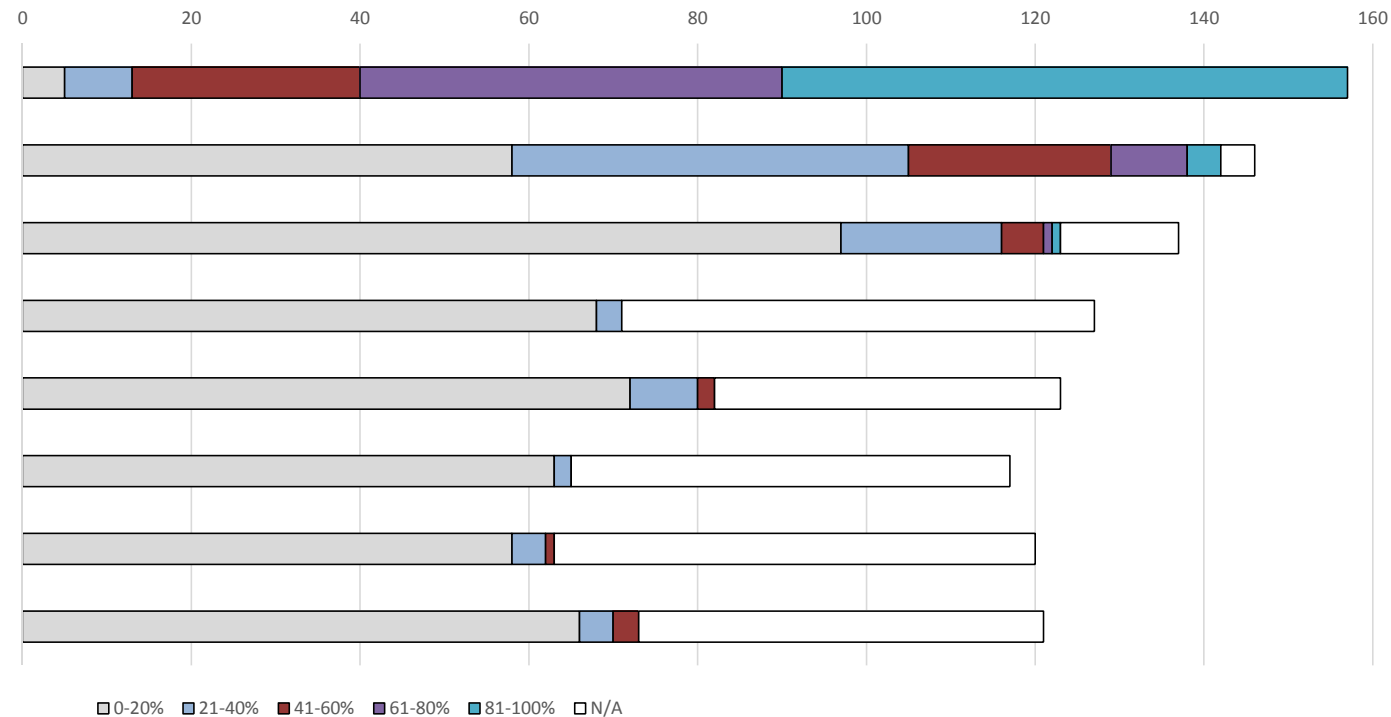
How is the decision to proceed with DBS established?



What targets are utilized for Parkinson Disease?

Frequency of Targets Used to Treat Parkinson Disease

respondents (n)





Conclusions and Future Directions

- ▶ Multisite, internationally collaborative, data collection is possible to evaluate referral and peri-operative management issues of DBS in PD
- ▶ There is a great deal of heterogeneity and practice variability among DBS Center and impact on patient outcomes is unknown
- ▶ Linking referral pathway and pre-operative data to outcomes from registry would allow data-driven prediction of best practices.

Questions?

Data Collection is **Still Underway**. If you'd like to participate, please follow the link below:



https://www.surveymonkey.com/r/DBS_Survey_MDS